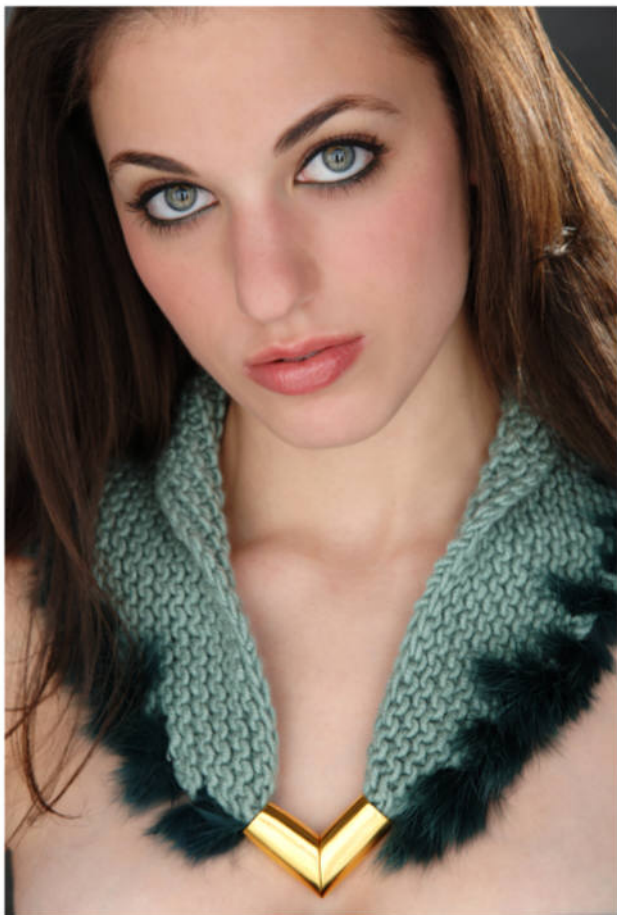


Mag**Knit**[®]



MagKnit[®]

Luscious Cashmere

One skein of chunky cashmere is all you need for this luxurious item! Use any yarn, but make sure the knit is not too tight; since this shawlette has no knit-in shaping, it needs to stretch a bit to drape around the shoulders.

1 skein chunky cashmere yarn

3 yards of rabbit fur in a complimentary color, for trim

1 pair size 11 needles, or size 11 round needle

Cast on 3 stitches (center lower edge of back).

Knit all rows, inc 1 st at each end of every row.

When work has reached desired length for the neck edge, stop increasing, and knit 5 more rows. Cast off.

This shawlette is approximately 24 inches from end to end, with 68 stitches in the final 5 rows. Starting ½ inch from end, whipstitch rabbit fur loosely along lower edge of necklace. Do not pull tightly- you want the lower edge to be able to stretch. Stop ½ inch from end.

When preparing ends of knitting for the clasp (see MagKnit Kit instructions), incorporate ends of trim



Pictured here in Sinful, by Classic Elite Yarns

(www.classiceliteyarns.com), it also looks great in Scozia Print Cashmere from Filatura di Crosa (use size 13 needles), or try a lighter version in Cashmere Breeze, from S. Charles Collezione (www.tahkistacycharles.com).

www.magknit.com

© Copyright 2006 Barbara Zucker Patent Pending