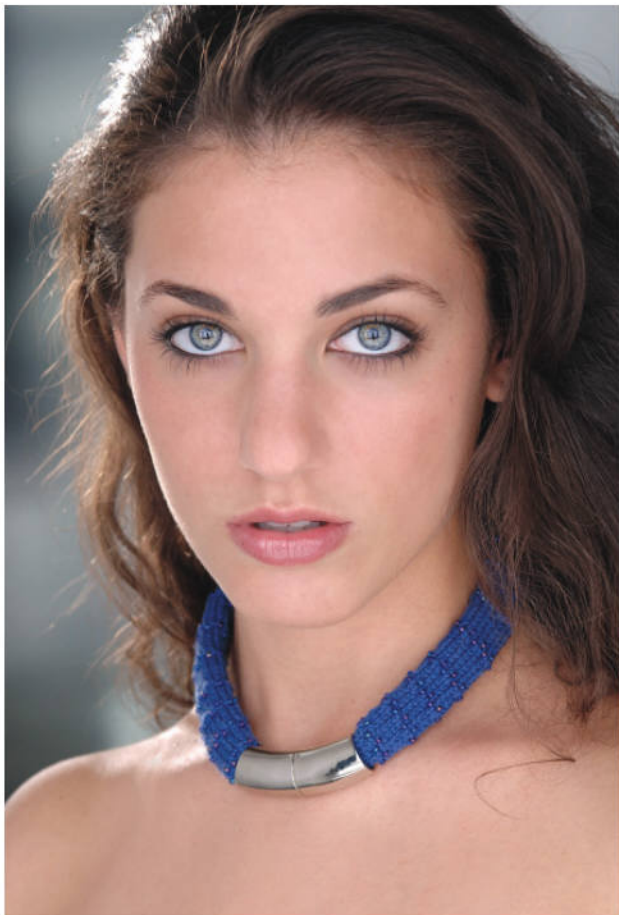


Mag**Knit**®



MagKnit[®]

Beaded Beauty

Pair size 3 needles
Sport weight yarn
Beads

Thread beads onto yarn.

Cast on 20 stitches. Work in stockinette stitch.

To add beads on a right side, K row:

K, with yarn in front, slide bead up to last knitted stitch. Slip next stitch purlwise (behind yarn), K.

Use this technique: slide bead up to last stitch, then slip 1, keeping yarn and bead on RS of work to add beads wherever you wish.

This necklace places beads in alternate stitches, every other row, with a gap of several rows in between. You can create your own pattern.



www.magknit.com

© Copyright 2006 Barbara Zucker Patent Pending