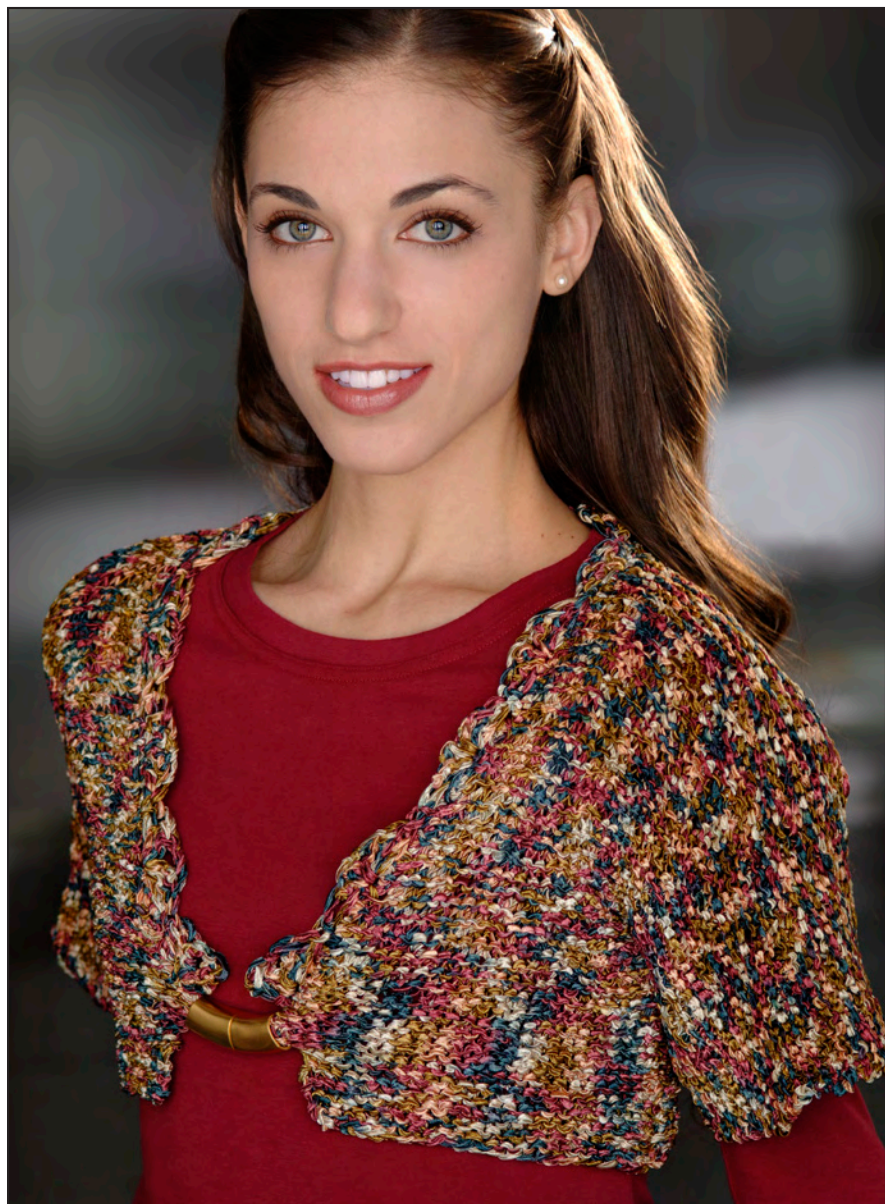


# MagKnit™



*[www.magknit.com](http://www.magknit.com)*

# MagKnit™

## MagKnit Autumn Shrug

Work entire garment in garter st.

Size 10 needles

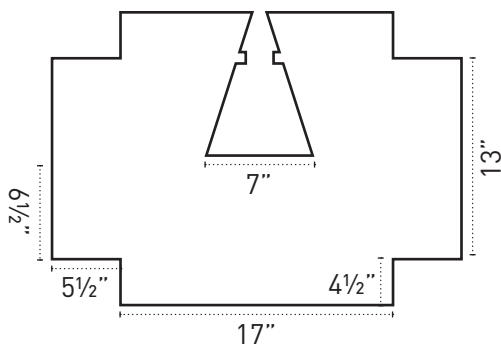
4 balls Crystal Palace Yarns,  
Party ribbon yarn

**Gauge:** 26 rows, 16 st per 4 inches

- Cast on 66 st. Work in garter st until piece measures 4½ inches.
- Add 25 st at end of each of next 2 rows (*sleeves*).
- Work in garter st. for 6½ inches.
- Cast off center 27 st for back neck edge.
- Work each side for 6½ inches, then cast off 25 from each outer edge (*bottom of sleeves*).

### AT SAME TIME:

- At neck edge, inc 1 st every 6 rows.
- At 19" from start, add 4 st at neck edge.
- 4 rows later, cast off the 2 st, and 4 rows later cast off another 2 st (*tab for Magknit clasp*).
- Work even for remaining 1½ inches.
- Cast off.
- Sew up underarm and side seams. Attach MagKnit clasp to tabs.
- If desired, crochet around neck edge: 1 row sc, 1 row shell st.



[www.magknit.com](http://www.magknit.com)

Barbara Zucker © 2008  
Patent # 7,377,128